

A young girl with dark hair styled in two buns, wearing a black school uniform with a white collar, is sitting at a desk. She has her right hand raised and is smiling slightly. The background shows a classroom setting with a window and some papers on the wall.

**TLG** EDUCATION  
CENTRES

Getting you  
started.

# Offering second chances

With over 20 years' experience, TLG Education Centres enable churches like yours to bring vital support for disadvantaged and excluded young people at crisis point in their education.



In your community, there are children facing issues such as family breakdown, bereavement, drug and alcohol abuse, bullying, poverty, gang culture, mental or other illness, lack of parental support and many other distressing circumstances. It's seldom possible for a young person to battle through any of these without it taking a damaging toll on their education.

TLG offers you a unique and exciting opportunity to reach out and support some of the most vulnerable young people in your community through a TLG Education Centre at your church.

By opening an Education Centre with TLG, your church will offer a safe and nurturing place for struggling young people to learn. We are unique, fusing formal and

## The current struggle:

- Over 460,000 children were excluded from school in the UK last year.
- Children who have been taken into care are twice as likely to be excluded as those who have not.
- Pupils known to be eligible for and claiming free school meals are four times more likely to be excluded than those who aren't.
- Only 1% of excluded pupils get the 5 good GCSEs needed to access the workforce.

informal elements of education, alongside mentoring and pastoral support. TLG is all about being mainstream but missional. We're serious about returning young people to school, college or employment and at the heart of everything we do is a vibrant

passion to see local churches bring hope and a future to struggling children and families.

A partnership with TLG will enable you to sow deeper into your community and see lives transformed in an incredible way.

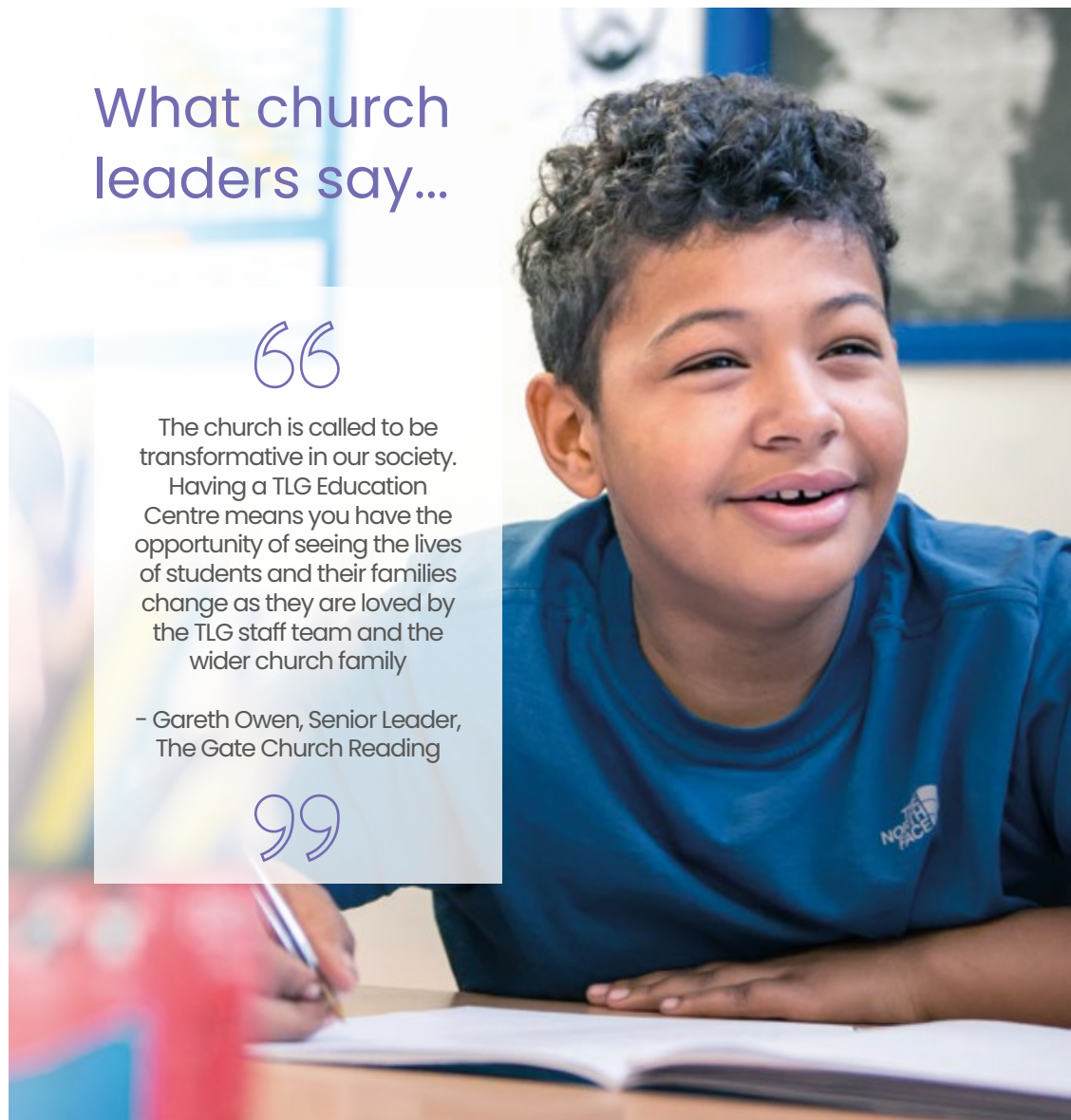
## What church leaders say...

“

The church is called to be transformative in our society. Having a TLG Education Centre means you have the opportunity of seeing the lives of students and their families change as they are loved by the TLG staff team and the wider church family

- Gareth Owen, Senior Leader, The Gate Church Reading

”



# How a TLG Education Centre works

---

Our Education Centres are run fully in partnership with your church. Because of this, our model offers an effective fusion that brings together the understanding you have of your community's context and the expertise and professional support of TLG.

At the heart of each TLG Education Centre you'll find a team of Christian staff. You'll recruit a head teacher to lead the centre, who is ideally a qualified teacher, and they'll be supported by an assistant teacher. Some centres also employ a third member of staff.

Your church's Education Centre will support between 6 and 12 young people through an educational programme, structured around six lessons a day.

The young people follow a curriculum that focuses on English, Maths and ICT. It also includes Science, Personal & Social Education and a range of other subject areas that allow the students to gain vital qualifications to progress to further education or employment.

TLG Education Centres have a high staff to pupil ratio (1 staff to 3 young people) enabling the young people to receive the crucial pastoral support they need.

Your congregation will also be able to play an active role in the centre. Each centre is boosted by volunteers, who can support either in the classroom or through family support.

Your church can also run activities outside of the school day in order to see transformation in the lives of young people beyond education. In addition to this, TLG provides opportunities for young people from your centre to explore faith through one of our residentials.



# Explore

---

If you're ready to take your church on an exciting journey and are looking to dig your roots deep into your community, then we'd love to help you fully explore opening a TLG Education Centre.

Before committing to opening your own TLG Education Centre, there are several opportunities to find out more about how it all works day to day.

We'll arrange an opportunity to meet your church leadership team, during which we'll explain all about our partnership agreement, finances, referrals and any other questions you may have.

We'll visit the building in which you're hoping to house your Education Centre. We'll let you know how suitable it is based on Ofsted requirements and let you know if we think there are changes that need to be made.

Also, your church leadership team will be invited up to our head office in Bradford where you'll be able to meet our Education Centre Development team and our HR team, both of which will play a significant role in the life of your Education Centre.

Finally, you will of course have a chance to see one of our Education Centres in action where you'll be able to witness the tremendous difference an existing TLG partner church is making.



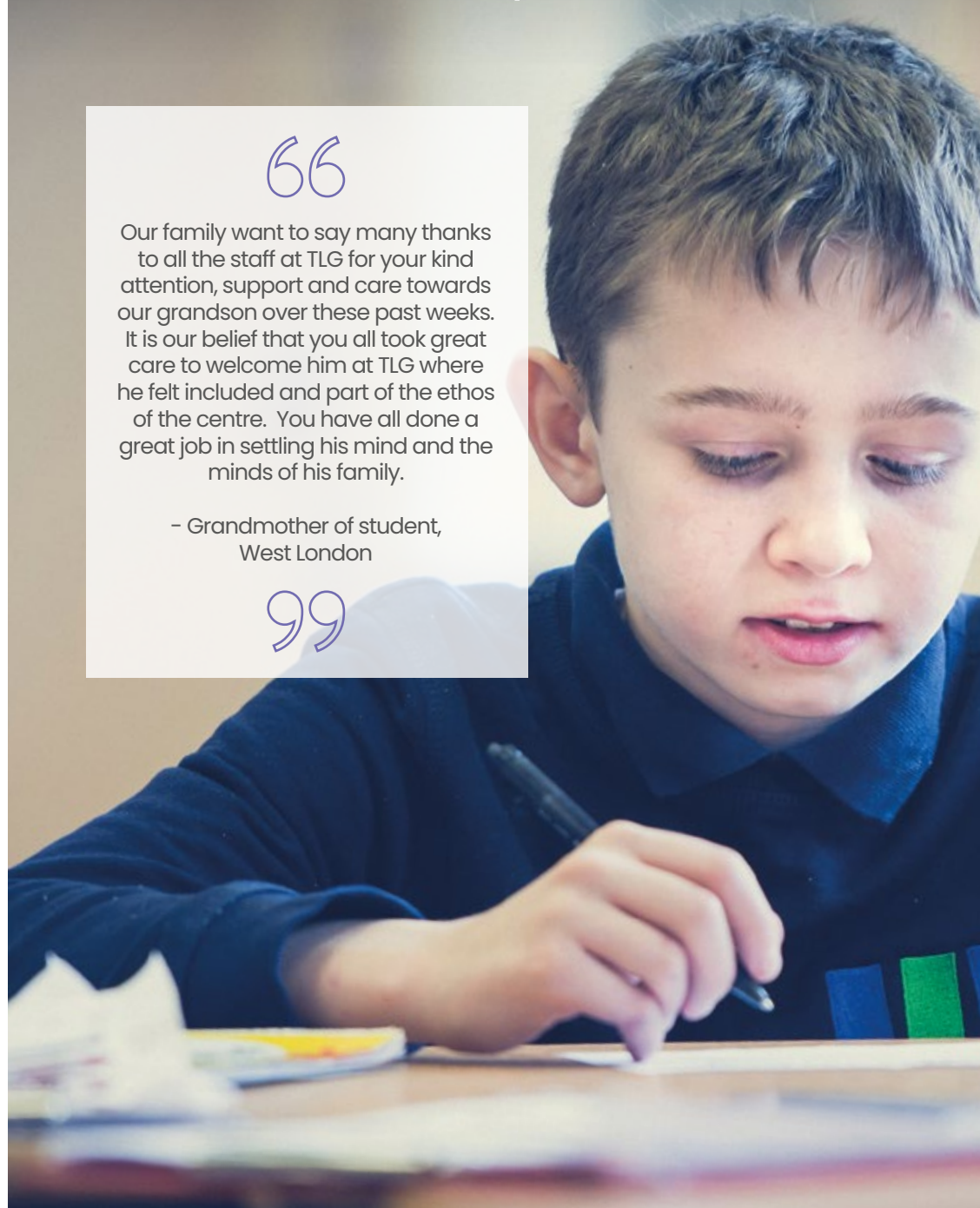
## What families say...

“

Our family want to say many thanks to all the staff at TLG for your kind attention, support and care towards our grandson over these past weeks. It is our belief that you all took great care to welcome him at TLG where he felt included and part of the ethos of the centre. You have all done a great job in settling his mind and the minds of his family.

- Grandmother of student,  
West London

”



# Getting going

---

If your church leadership team is ready to make the all-important decision about opening a TLG Education Centre, we'll ask you to sign our partnership agreement and we'll sign it too. From there, we can really get things going and help you to get everything ready before you open your doors.

There will be fundraising required for building and equipment costs for the centre so we'll provide you with all the necessary advice and support to make that happen.

Our expert team will also work alongside you as you meet with local schools and the local education authority to generate referral routes.



# Making preparations

---

Ahead of your centre's launch, we'll be working with you to ensure the centre is ready to go.

During this phase, we'll ensure that the building meets all the statutory requirements. You'll also purchase the equipment and furnishing needed to turn your building into a school!

We'll act as a recruiting agent for your church, providing advice and guidance in the recruitment process to find you a professional and gifted team to launch your brand new centre! Recruitment is a joint process between TLG and your church but all recruited staff will be employed by your church.

To govern your centre, you'll form a Management Committee. You should identify a key person from your church to act as the Chair of the Management Committee and work with TLG to lead and manage the centre. TLG's School Development Manager and your centre's Head Teacher will also join the Management Committee, providing highly valuable frontline insight.



## What volunteers say...

“

My time at TLG was one of the greatest periods of my life. The kids were incredible. At their core, they are like all of us – people wanting to be loved and respected. They taught me more than I taught them.

- Kyle, volunteer at  
TLG Newcastle

”

“

I loved my time at TLG. It was a real privilege and a very rewarding experience. Working alongside the creative and lively staff was amazing too, and great fun was had every day.

- Hillary, volunteer at  
TLG Newcastle

”



# Launch

---

We love working in partnership with churches and a church is, of course, made up of many more people than the leadership team.

That's why we always make time for one of TLG's senior leaders to present to your congregation prior to the centre opening. It's a really special time of inspiring the church about TLG and how they can get involved, but also an important time to give thanks to God for all the lives that the centre will touch.

Before the centre opens, your centre staff will spend time in Bradford as part of their learning and development induction. With a wealth of experience supporting some of the most hard-to-reach young people, our Education Centre Development team will equip your staff to make a life-transforming difference to the students that walk through your doors.

We'll help you to host an open day, to generate referral enquiries and our experienced team will make sure you're fully prepared for any future Ofsted inspections.



The final and most exciting stage of your journey is to open doors for the first time! From then on, TLG will equip you every step of the way, ensuring that young people are given a vital second chance through the power of the local church.

## What students say...

“

Before TLG, I just kept getting excluded and it really knocked my confidence. TLG helped me to be a new person. Now I'm back in mainstream school and I've planned out my future. I've come so far and I think it was part of God's plan for my life that I went to TLG.

- Millie-Rae, student, TLG Bolton

”

“

I used to be one of those tricky students, not obeying teachers. But when I came to TLG I decided I wasn't going to be typical Rory anymore. At TLG, it felt like a family and they really helped me. I think TLG has transformed my life for good.

- Rory, student, TLG West London

”



# Costs

---

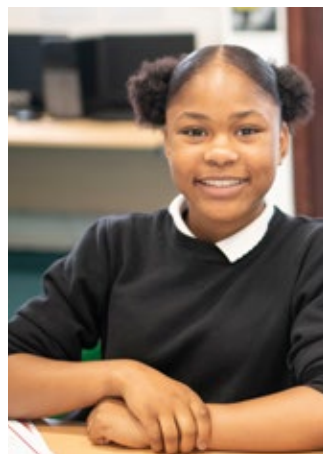
Once your centre has established itself in the community, the fees paid by the local authority and schools referring to the centre contribute to day-to-day running costs.

At the exploration stage, we'll be able to talk you through the staffing costs and help you to forecast the expected income from referrals.

The cost of setting up a TLG Education Centre broadly comprises of three distinct areas:

- The first cost you'll need to consider is the equipping of the centre.
- The second cost covers building modifications to meet Department for Education standards.
- The final financial commitment is the cost of employing the staff team and running the centre.

Costs will vary from church to church – for example, depending on your building suitability. However, we'll be able to give you an accurate estimate early on when we visit your premises and begin our journey together.



## What a partnership with TLG offers you...

- Support with Department for Education registration and on going Ofsted-readiness from our highly experienced Education Centre Development team
- Capital works and project supervision in opening the centre
- Guidance in fundraising for capital work and centre equipment costs
- Professional & educational line management support to the Head Teacher
- Initial and on going advice regarding student referrals from the local authority and surrounding schools
- Learning & development opportunities for your teaching staff, including continuous professional development
- Rigorous 'safer recruitment' process for all Education Centre staff
- Advice and supervision from the Education Centre Development team in developing an effective curriculum for our students, including on-going training for teaching staff
- ICT installation and on-going technical maintenance, including emergency support
- Financial services including invoicing and chasing up of referral payments
- Our Fast Track Intern programme, an 11-month leadership development programme for interns working with the church partner

In addition, students from your Education Centre will be able to attend our Faith Residentials – opportunities to have a trip away at an activity centre and discover more about the Christian faith – at no extra cost to you!



# Partnering with TLG: your next steps...

---

Our Church Partnerships team would love to begin a conversation with you. With hundreds of church partners, we've helped churches of all shapes and sizes find the right TLG programme for them and their community.



You can call us on **01274 900377** or just drop us an email at **partnerships@tlg.org.uk**



Alternatively, visit **tlg.org.uk/your-church** to explore the options further.



[tlg.org.uk](https://www.tlg.org.uk)

t. 01274 900 373

e. [info@tlg.org.uk](mailto:info@tlg.org.uk)



[facebook.com/tlg.org](https://facebook.com/tlg.org)



[@tlg\\_org](https://twitter.com/tlg_org)