



PARTNERSHIPS WITH TLG



Getting started
with TLG Make Lunch

TLG Make Lunch

Community, belonging & meals that matter

Over half of all families in the UK with children under five now struggle financially or with their mental health (UNICEF UK). **What if your church could transform the situation for your community?**

More than a meal...

Across the UK, 4.3 million children live in poverty, leaving many families struggling with food insecurity, isolation, and mental health challenges. School holidays are especially tough, with children missing out on meals, friendships, and activities.

TLG Make Lunch partners with local churches to provide safe spaces where families enjoy nutritious meals, fun activities, and a sense of belonging. TLG equips churches with volunteer training, safeguarding support, and bespoke trauma-informed resources to help those struggling emotionally. Clubs are then well positioned to respond quickly to emerging crises and connect families with the broader church community and other local support services.

Beyond the holidays, TLG Make Lunch clubs foster lasting connections, ensuring families feel supported year-round. Together, we're tackling food insecurity and isolation – with **community, belonging and meals that matter**.

66

I like coming to Make Lunch because it makes me feel like I can be myself. It makes me feel happy.

– Tahlia, aged 11, Anglesey

99

66

My mum and dad don't have to worry about looking after us, what we're going to do, they don't need to run after us, they do feel less worried now. It's just a joyful experience!

– Joe, aged 8, Cleveleys

99



Exploring a partnership with TLG

Because TLG Make Lunch will become a vibrant ministry of your church, it's really important for your church's leadership to have an opportunity to fully explore the exciting impact that running a Make Lunch club can have.

As well as talking with your church leadership team to discuss whether this programme is right for you, you may be thinking about venue locations, how to recruit a team and which of the schools in your local area you could partner with.

Our Church Partnerships team are here to walk with you through any questions you may have. TLG will support you in the detail as you focus on the vision for your club, personalising it to fit your community and its needs.

TLG supports you in safely recruiting and engaging compassionate volunteers. We ensure our team members receive training and tailored support in areas such as food hygiene, allergy awareness and safeguarding. Exclusive funding streams are available to our Make Lunch partners, and our team will train and guide churches on how best to access these and other available opportunities.

To start the conversation and to find out more, call our team today on **01274 900377**.



By joining the growing number of churches offering TLG Make Lunch, your church will...

- join a national movement of churches transforming their communities
- build connections with those in need of practical and emotional support in your local area
- have the confidence and understanding to support those affected by trauma and create a space for struggling families to experience a sense of belonging
- be inspired with new ways to connect families into wider church life, including support to run your own Family Faith Fun Day
- access streams of funding and other practical support
- receive bespoke support and expert training from TLG at every stage
- be given access to 'Kitchen Cupboard,' our bespoke online platform designed to support you with the administration of your club, and to provide recipes and activity ideas to equip and engage your team
- be invited to attend regular forums with other Make Lunch Coordinators and volunteers to share best practice and support one another.

Partner

Once your church has made the fantastic decision to begin running Make Lunch, we'll ask you to identify a core team of three to lead your club, one of whom will be the lead volunteer – or, as we like to call them, Make Lunch Coordinator!

TLG will support your Make Lunch Coordinator in taking the all important steps to opening your Make Lunch club. From liaising with schools and understanding the necessary policies you'll need in place, to putting together a brilliant group of volunteers, our support team will help you make your vision a reality.

At this stage, TLG will support you to...

- sign and return the TLG Make Lunch Partnership Agreement to us
- choose your church's Make Lunch Coordinator and ask them to fill in a short application form
- begin recruiting volunteers from within the church. You'll need at least three in your team for us to train you.
- confirm your partner school(s).

66

We decided to run a Make Lunch club because we saw that food insecurity was an issue in our city. One mum has built a close friendship with the volunteers over the last couple of years and, as such, she has come along to church as well.

It's not always easy, we're not a church that has our own building – we rent a hall each week, but people are coming because it is a safe place where they can build friendships and know that nobody will judge them.

– Matt, Church Leader, Leicester

99

66

Bridges have been built with our community. The families come because they know that we're a safe place to come and they know us all. In a way, we've become family. Out of Make Lunch, I've done ten baptisms, and three weddings!

– Cathy, Church Leader, Ashford

99



Prepare

Having partnered with TLG, we'll prepare you and your team with comprehensive online training to equip you with the tools you need to get started.

We will also meet online with your TLG Church Relationship Lead for a bespoke follow up session where they can ask questions and make plans tailored specifically to your club.

In our training, we'll go into more depth about the practicalities involved in running Make Lunch through your church, including building a team of volunteers, food preparation, safeguarding, funding and how to measure the impact of Make Lunch. Plus we'll fill you in on the support you'll receive from us as you join the TLG family.

As an official partner, you'll have unique access to a wealth of resources as part of our bespoke online system, 'Kitchen Cupboard'. There, you'll also find plenty of recipes and fun activity ideas to use!

At this stage, TLG will support you to...

- organise your team training with your Church Relationship Lead
- identify a suitable venue. This doesn't have to be at your church, it could be in your local school or at a community centre. Our partner churches have opened Make Lunch clubs across a range of different venue types.

“

We wanted to start Make Lunch in Bath after hearing how many children and their families are living in poverty in our city. One mum told us that coming to Make Lunch has really helped her this summer, knowing that she and her children could get out of the house twice a week to somewhere safe and fun.

- Claire, Lunch Maker

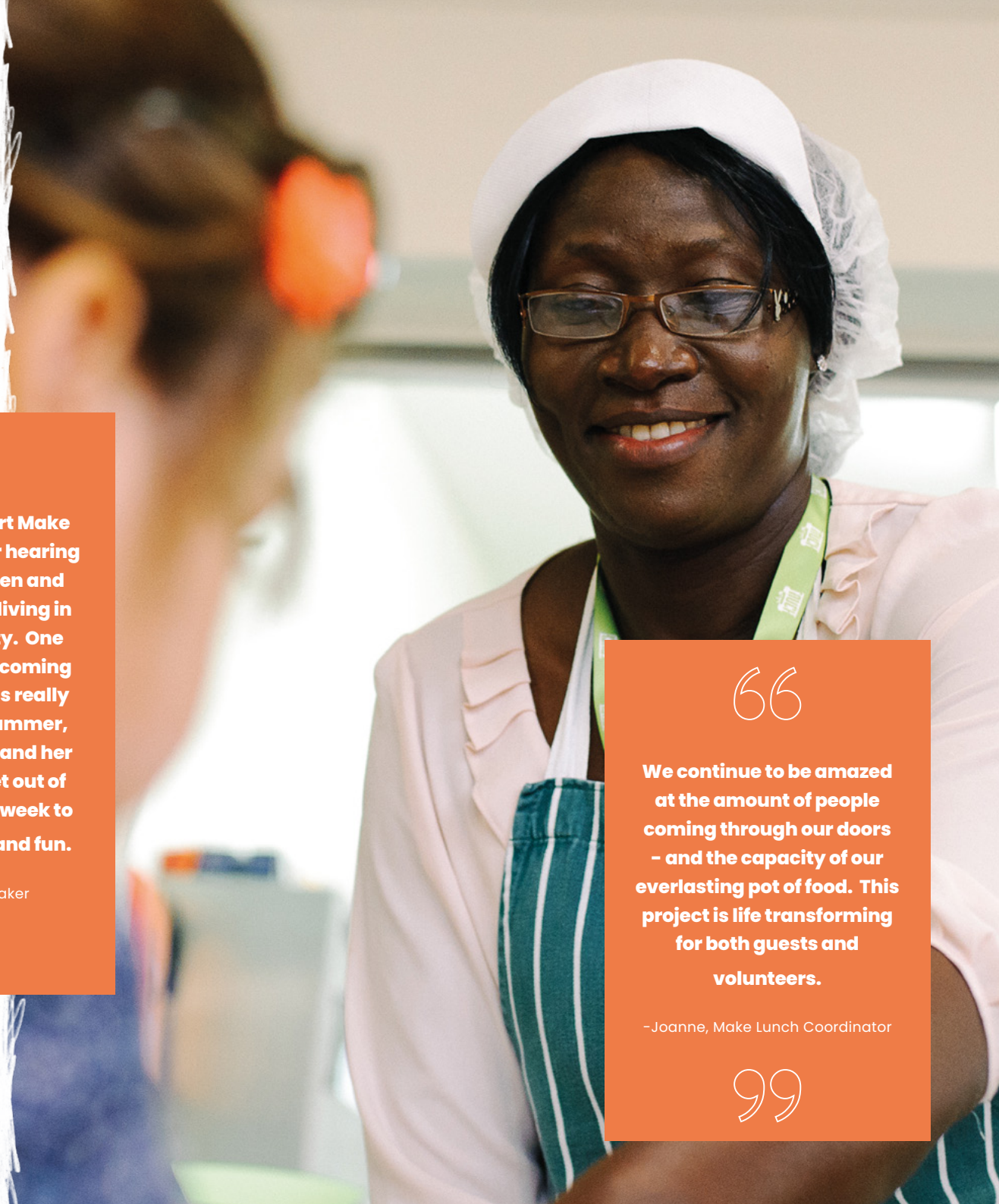
”

“

We continue to be amazed at the amount of people coming through our doors - and the capacity of our everlasting pot of food. This project is life transforming for both guests and volunteers.

- Joanne, Make Lunch Coordinator

”



Launch

Once your team is trained, your Make Lunch club is ready to open. We'd recommend you start planning at least a school term before you want to run your first Make Lunch session to allow time to put all the preparations in place!

We'll offer all the best advice we can to help you spread the word about your Make Lunch club through local schools and community organisations.

At this stage, TLG will support you to...

- book a TLG speaker to launch the programme in your church and recruit volunteers
- be guided through the set-up of the programme in your community, with support for your Coordinator from our Make Lunch team
- ensure you have met all the statutory requirements for your Make Lunch club to open. Don't worry – it's not as scary as it sounds. We'll explain it all along the way but a full list of what you'll need in place is available at www.tlg.org.uk/make-lunch/checklist



66

I get to see my friends & make new ones too. I liked the sausages with gravy. It's my favourite lunch!

– Jamie, age 9, Ardrassan

99

66

Sometimes we don't have lunch because we run out of bread and stuff to go in sandwiches so if we don't have money we can't buy that stuff.

– Shania, age 11, Norwich

99

Grow

We really want to help volunteers make a lasting impact. We're serious about building great partnerships! That's why, as an official TLG partner church, you'll have access to:

- ongoing support from our Make Lunch team. We'll check in with you to see how you're doing but we're also available whenever you need any support or questions answering
- places for members of your Core Team at TLG's national annual conference, 'Connected'
- access to forums to share best practice and unite with other Make Lunch teams across the UK, plus receive further training and resources.



As well as fighting food insecurity and loneliness in your corner of the UK, being part of TLG helps us to build the case for long-term change. Plus, by sharing with us the impact that your Make Lunch club is making, you'll be contributing to national research – making an even bigger difference.

Your partnership with us strengthens our voice as we campaign on behalf of struggling children and families across the UK.

“

Things had got so bad that my daughter's school had put things in place for us over the school holidays. One of the things we were told about was Make Lunch at the Baptist church in town. Make Lunch has turned out to be a lifesaver for us – a complete godsend.

– Joanne, mum of one,
St Helens

”

“

TLG Make Lunch is relaxing and comforting. I feel like I am supposed to be here – like there's a purpose for me here. You get a sense of belonging as soon as you walk in.

– Lee, parent of 7, Anglesey

”



Costs

At TLG, we're passionate about making sure churches can bring transformation to their communities in a way that is sustainable, professional and makes the greatest possible impact. So, with that in mind, what does it cost a church to begin Make Lunch?

Training – £200 one-off payment:

This one-off cost covers the training day of your Make Lunch core team of three to five Lunch Makers (including your Coordinator). Our training is based on years of best practice and will equip your team of volunteers to make a real difference. We'll coach you through the statutory requirements and help you to know how best to reach the struggling children and families in your community as you journey towards launching.

Partnership Subscription – £20 per month:

A monthly partnership subscription of just £20 offers you all the valuable support you'll need and will ensure you receive the latest and most effective resources to transform the lives of families in need.



Partnering with TLG: your next steps...

Our Church Partnerships team would love to begin a conversation with you. With hundreds of church partners, we've helped churches of all shapes and sizes find the right TLG programme for them and their community.



You can call us on **01274 900377** or just drop us an email at **partnerships@tlg.org.uk**



Visit **www.tlg.org.uk/your-church** to explore the options further.





tlg.org.uk t. 01274 900 373 e. info@tlg.org.uk

 [tlg.org](https://www.facebook.com/tlg.org)  [tlg.charity](https://www.instagram.com/tlg.charity)  [tlg-charity](https://www.linkedin.com/company/tlg-charity)

Transforming Lives for Good (TLG) is a registered charity in England & Wales no. 1074114 & Scotland no. SC050810, and a registered data user no. Z9118214. Registered address: Transforming Lives for Good (TLG) Ltd, National Support, Hope Park, Bradford, BD5 8HH.